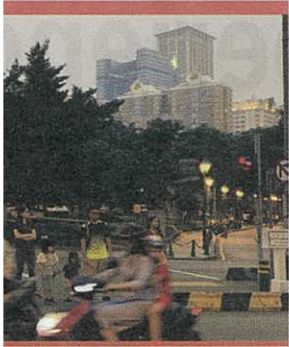


ER TRAFFIC 500 TRIPS



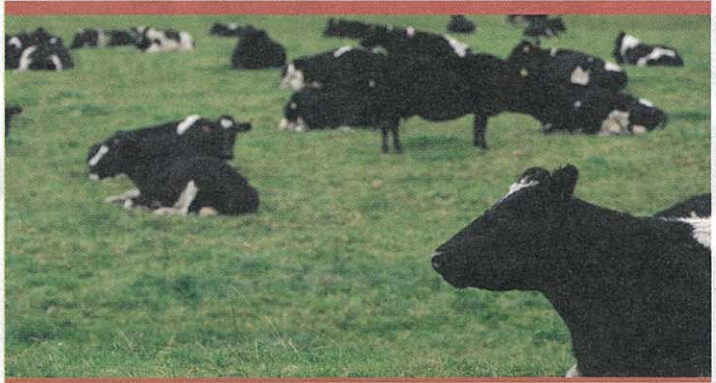
International Airport totaled 1,638 in August, a growth of 10.5% year-on-year. Trips to and from mainland China (2,762) and Taiwan (1,243) showed respective increases of 31.8% and 13.9%.

Inbound and outbound commercial flights in the first eight months rose by 19.5% year-on-year to 8,753 trips.

Also according to the released data, the number of traffic accidents went up by 19.6% year-on-year to 1,578 in August, and the number of injuries totaled 104.

In the first eight months, there were 8,915 traffic accidents. The number of vic-

AP PHOTO



CESL ASIA ACQUIRES MONTE DO PASTO IN 37.5M EURO DEAL

THE CESL Asia - Investments and Services Limited group has formalized the acquisition of the Monte do Pasto Group, located in the Portuguese municipalities of Cuba and Alvitó. The acquisition was made through its wholly-owned subsidiaries Focus Platform and Focus Agriculture.

Monte do Pasto, which oversees nine farms in the Alentejo region spanning almost 3,700 hectares, exports around 30,000 live cattle per year, mainly to North Africa and the Levant, but also to neighboring Spain. The value of the business has not yet been disclosed, but Portuguese news agency Lusa said it is 37.5

million euros. The group stated in a statement that it plans to develop, with Monte do Pasto, a platform that will enhance existing productions and that will also allow for the launch of new sustainable agricultural and livestock activities.

The acquisition is also expected to boost exports to the Macau and China markets and to seize the opportunities created by a platform for social and economic cooperation between China, Portugal and the Portuguese-speaking countries.

"We expect to diversify our investments into other sectors related to our competencies, namely in agriculture, import and export of high quality food